

**IOWA**

# CHEMICAL AND BIOCHEMICAL ENGINEERING



**DISCOVER  
IOWA**



## RESEARCH AREAS OF STRENGTH



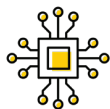
**AIR QUALITY & CLIMATE**



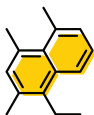
**BIOLOGICAL &  
PHARMACEUTICAL**



**REMOTE &  
SMART SENSING**



**MACHINE LEARNING  
& SIMULATION**



**POLYMER &  
ADVANCED MATERIAL**



**SUSTAINABLE ENERGY  
& CLEAN WATER**

## STUDENT SUPPORT



**FULLY FUNDED  
FOR 5 YEARS**



**LOW STUDENT  
TO ADVISOR RATIO**



**INDUSTRIAL ALUMNI  
MENTORING PROGRAM**